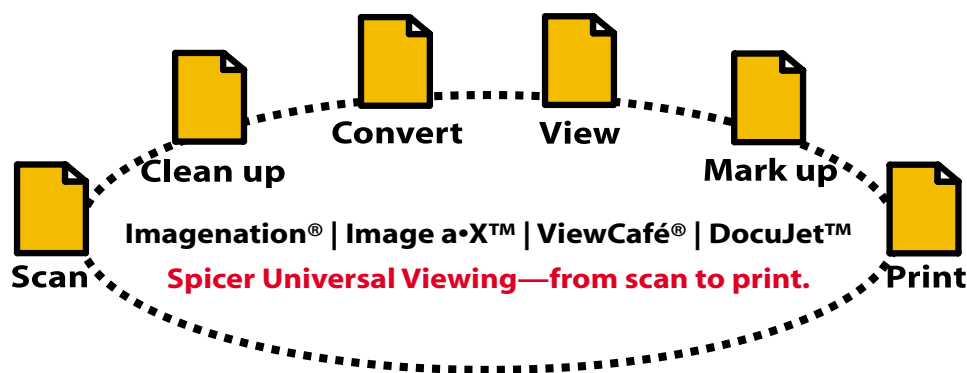


Spicer, at every step of the document lifecycle

Easily customize your imaging needs across your organization.



Spicer Corporation's suite of interoperable client- and server-based document viewing solutions gives businesses of any size the ability to deploy the Spicer solution, or combination of solutions, that best fits with their processes.

The team of Imagenation, Image a•X, ViewCafé, and DocuJet offers the power of universal viewing to all employees, partners and clients. Whether an organization simply needs to view documents stored in a local database, or collaboratively review plans for a mega-project with business partners that are scattered throughout the world, Spicer products provide the means to do it.

Spicer Universal Viewers have the capability to quickly and accurately view and print over 200 industry-standard file formats. Moreover, markups made in one Spicer application can be saved and displayed in any other Spicer visualization product.

This interoperability among Spicer products assures businesses that files which are

viewed or marked up at one location can be opened and read by Spicer users at any other location regardless of whether employees are using the Spicer desktop, Web, or ActiveX implementation.

From beginning to end of the document lifecycle, Spicer Imagenation, Image a•X, ViewCafé, and DocuJet can help you access, share, and communicate the information you and your business partners require.

Spicer Universal Viewing solutions for the enterprise are available for all client and server configurations on Windows, Linux and Macintosh.

Download more **FREE** evaluation software today from www.SPICER.com.

More DocuJet

Benefits of raster renditions include:

- Provide access and review of documents without requiring the native/authoring application(s).
- Protect your networks. Renditions are safe, and not able to contain viruses.
- Streamline information workflow and exchange. Renditions are often smaller and portable.
- Protect your intellectual property. Renditions do not contain "meta data" that can expose unexpected information.
- Easily manage and archive your data. Renditions can contain permanent tracking data, such as a date or copyright.

System Requirements

- Microsoft Windows 2000, XP, 2003
- Pentium class processor or better
- 64 MB RAM (128MB recommended)
- 45 MB free disk or network space

Common Applications

- Create raster image renditions of files for archiving.
- Eliminate document printing and scan-to-file.
- Generate images for a network print queue or fax server.
- Create secure, shareable renditions for review and markup.
- OEM: Create a custom print driver
- Generate files for regulation compliance.

Worldwide customers include:

- Manulife
- NCR Corporation
- Xerox
- First Energy
- City of Eindhoven, Netherlands
- MN Services, Netherlands
- SAAB Marine Electronics AB, Germany
- Deutsche Bahn, Germany

Download your **FREE** DocuJet evaluation software today, at www.SPICER.com, or email us at info@spicer.com.

© 2005 Spicer Corporation. Printed in Canada. Trademarks are the property of their respective owners. PrintWhere is a registered trademark of PrinterOn Corporation. Imagenation, ViewCafé, Image a•X, and DocuJet are trademarks or registered trademarks of Spicer Corporation.

Scan | View | Markup | Edit | Print | Web | 3D

When Seeing Means Everything

As demand increases for viewing and sharing electronic documents across enterprises and with the public, the ability to generate secure, accurate and highly portable files in standard formats, has become a priority in many industries. DocuJet, a powerful tool for generating raster images from any Windows application, helps industries comply with standards, eliminate print and scan-to-file processes, speed up fax queues, and generate images for archival purposes.

Ensure Regulation Compliance

Under regulations such as the Freedom of Information Act (FOIA), providing access to records and documents externally and in standard formats is a high priority for many government organizations. Guidelines, such as the U.S. Nuclear Regulatory Commission (NRC) Information Exchange, require that documents and records are archived or submitted in a specific format, with specific properties. Using DocuJet to distill or convert files means that you can process all your documents in a consistent manner and reduce potential compliance errors. Other regulations require a permanent record of document properties. With DocuJet, documents can be saved to several standard formats, such as PDF and TIFF, and document information such as creation date, document name, or file number can be permanently stamped on the document prior to archiving.

Generate Images for a Fax Queue, and Decrease File Size for Archival

Insurance and legal organizations have to fax out hundreds or sometimes thousands of pages per day. One major North American insurance company creates faxes from large RTF source files, which contain a number of embedded objects, such as signature images and letterhead. When the faxes are processed through normal applications/servers, the output is very slow and each copy takes an

overwhelming amount of system resources.

Given the daily volume, this drain proved unacceptable. DocuJet provides a speedy alternative which uses minimal system resources to process and send the fax, and produces small, manageable TIFF files that can be easily archived.

View and Share Images Without the Native Authoring Tool

In some cases, internal or external users of an ECM system need to be able to easily view, but not modify, documents and drawings. Native applications and file viewers are always needed in the design/creation phase of a document. However, the imaging of finalized versions becomes a cost effective alternative to providing native viewing to end users. It also bypasses potential technical limitations posed by sharing files of varying versions and formats. Cost savings also increase when more complex files, such as CAD drawings are involved.

Eliminate Printing and Scanning—Create a Custom Print Driver

One of Spicer's partners uses DocuJet within their Document Management solution to provide "soft scanning". Command line controls are used to launch DocuJet within an application and send the resulting generated images to Imagenation - a Spicer Universal Viewer - for viewing, before checking the resulting raster image into the repository. This eliminates the need to print and then physically scan the document to file for storage.

With DocuJet, easily convert files into raster images and multi-page documents, known as renditions. File renditions are typically smaller and more portable, provide intellectual property protection, and contain permanent tracking information, such as date, or copyright. Renditions improve information management, archiving, and workflow.

Inside this profile

- **Cover** - Market applications
- **Inside - NEW!** features
- **Inside** - Now available: DocuJet Server Edition and DocuJet Toolkit
- **Inside** - Product preview.
- **Back** - Learn about more Spicer solutions, from scan to print
- **Back** - More DocuJet details

Feature Highlights

NEW! API - Integrate DocuJet into your custom applications with the API's simple and easy to use interface. Integrations in Visual Basic, C or C++ can be created quickly with an intuitive set of API functions and commands.

Color, Grayscale, and Black & White Output

Convert your documents to TIFFs, PDFs, JPEGs, and more! DocuJet outputs to a wide range of enterprise standard formats - see chart below.

Available Output Formats:

24-bit Color Formats

BMP, JPEG, JPEG Low Loss, PCX, PDF JPEG, PDF JPEG Low Loss, PDF LZW, PNG, TIFF JPEG, TIFF JPEG Low Loss, TIFF LZW, TIFF PackBits

Grayscale Formats

BMP, BMP RLE, JPEG, JPEG Low Loss, PCX, PDF JPEG, PDF JPEG Low Loss, PDF LZW, PNG, TIFF JPEG, TIFF JPEG Low Loss, TIFF LZW, TIFF PackBits

Black & White Formats

BMP, PCX, PDF Group4, PDF LZW, PNG, TIFF Fax Group3*, TIFF Group4*, TIFF LZW, TIFF PackBits

Custom Resolutions

Set the output resolution to the values you need. Also new are non-square fax resolutions for creating output for fax queues.

Document Name Variable

Set your file name to the original "Document Name".

Profiles - Create profiles of commonly used settings for processing documents. Use the Import/Export features to share profiles with other users.

Stamps - Place custom or standard variables (such as date and time) on your documents.

Product Preview

Easy to use and advanced output settings for office and Engineering documents

DocuJet is a multi-purpose imaging tool for generating easily viewable raster renditions from any Windows application. DocuJet functions like any Windows print driver; however, instead of printing the document on a printer or plotter, it creates a raster image file of the document.

Create One Multipage Document or Several Single-page Documents

DocuJet can capture all pages of a document, such as a Microsoft Word document, and produce a single, multipage raster image. Or create several single page raster images, each uniquely named.

Automatically Name Files

Use Document keywords to automatically generate unique, yet similar, file names for each image in a batch.

Custom Page Setup and Versatile Print Options

With DocuJet, you can produce images with different sizes, resolutions, and orientations. *Page Sizes* includes common and custom sizes up to 250 inches in length. *Resolution* includes common and custom resolutions up to 1600 dpi, and fax resolutions. File sizes can also be reduced by eliminating excess white space with the *Crop White Space* feature.

Output - Select Between TIFF, PDF, and More

DocuJet enables you to select your *Format*, browse to the *Folder* where your images will be saved and *Name* your file.

Halftone - Improve Image Quality

Convert your color documents easily to grayscale or black and white images. *Halftone* simulates gray or color with a particular pixel pattern and is primarily used for machine generated images, for example engineering documents. *Diffusion Dither* uses a specific algorithm for pixel distribution that is particularly good for photographs. By adjusting the *Brightness* and *Contrast* settings, you can create the

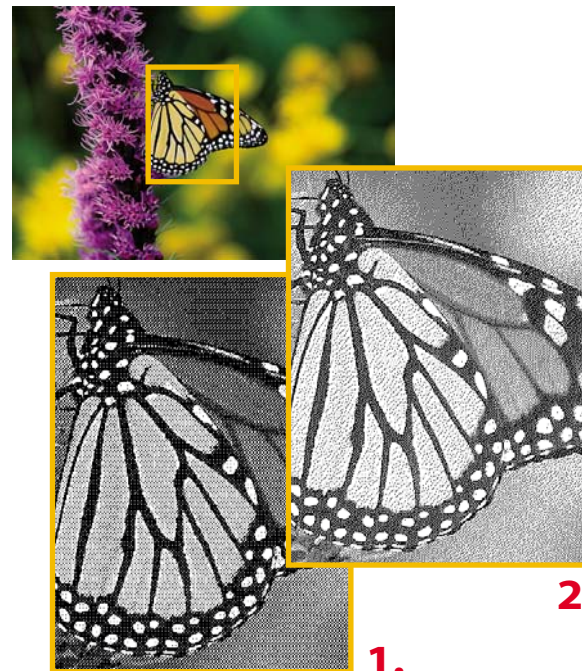
specific tonal values you want.

Looking for API functionality?

DocuJet's new API provides a DLL and an executable interface. Use command line controls to launch DocuJet within your application, configure profiles and print settings, and send the output to your application.

Create custom "Profiles"

Users can create and manage profiles to

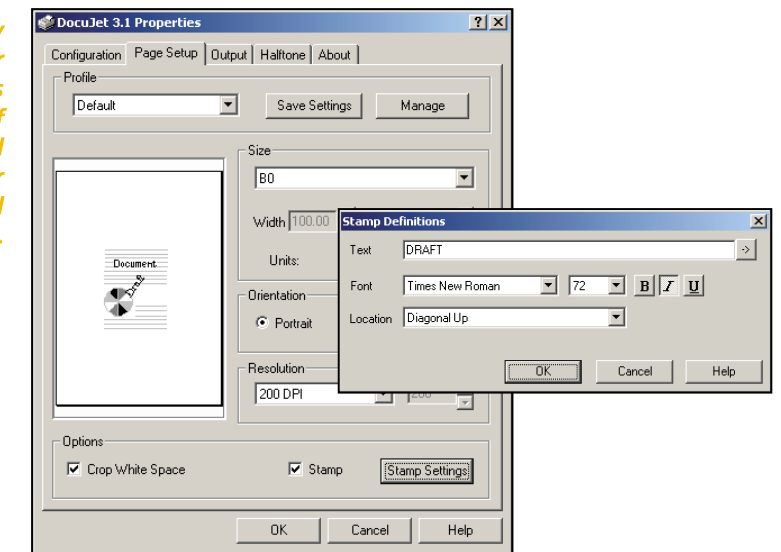
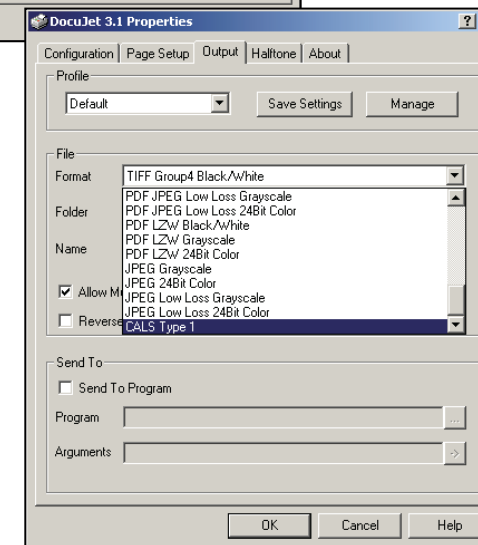
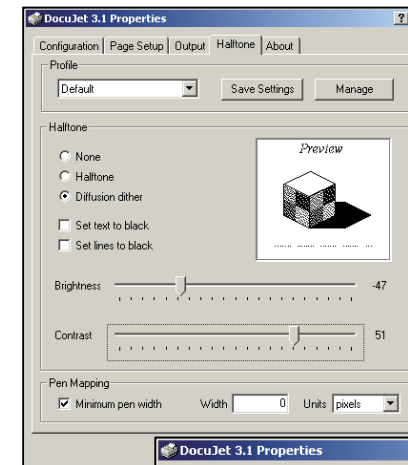


This example shows the DocuJet output of a high quality color photo to TIFF LZW Black and White format. Image 1 shows the results using Halftone, while Image 2 shows the results with Diffusion Dither. All other DocuJet options are identical.

improve productivity by reducing user error in common tasks.

Easy Integration

In addition to placing the rendered document on disk, DocuJet can launch 3rd party integrations with conversion parameters. This is ideal for tracking archived renditions, or sending converted output to print. Integrations in Visual Basic, C or C++ can be created quickly with an easy to use set of API functions and commands.



DocuJet's new easy-to-learn user interface provides a wide range of options to suit all of your renditioning and archive needs.

Quickly choose output file formats and set file names or specify external target programs for viewing generated documents.

Now Available



Easily generate quality raster images from any Windows application. With DocuJet™, users can create renditions for universal viewing, printing, plotting, or archiving. Try this cost effective alternative to printing and scanning-to-file. Download your free evaluation from www.SPICER.com.

Easy to Use—DocuJet Server Edition and DocuJet Toolkit

Install the Server Edition of DocuJet on a server to enable batch or queued processing and custom batch solutions for conversion, printing and rendition creation. Select DocuJet's programming interface, known as the DocuJet Toolkit or API, to create custom solutions.

Create Custom Solutions

The DocuJet Toolkit allows a 3rd party application to manage the DocuJet configuration settings. The DocuJet Toolkit is equipped with a Windows DLL (Dynamic Link Library) of functions and documentation, and the interface is compatible with Microsoft C, C++ or VisualBasic development environments.

The Toolkit also includes a "Batch Command" implementation. The Batch interface accepts parameters on a command line, and can be called upon from any application or simple batch files. This saves users time by simplifying and automating repetitive tasks.